



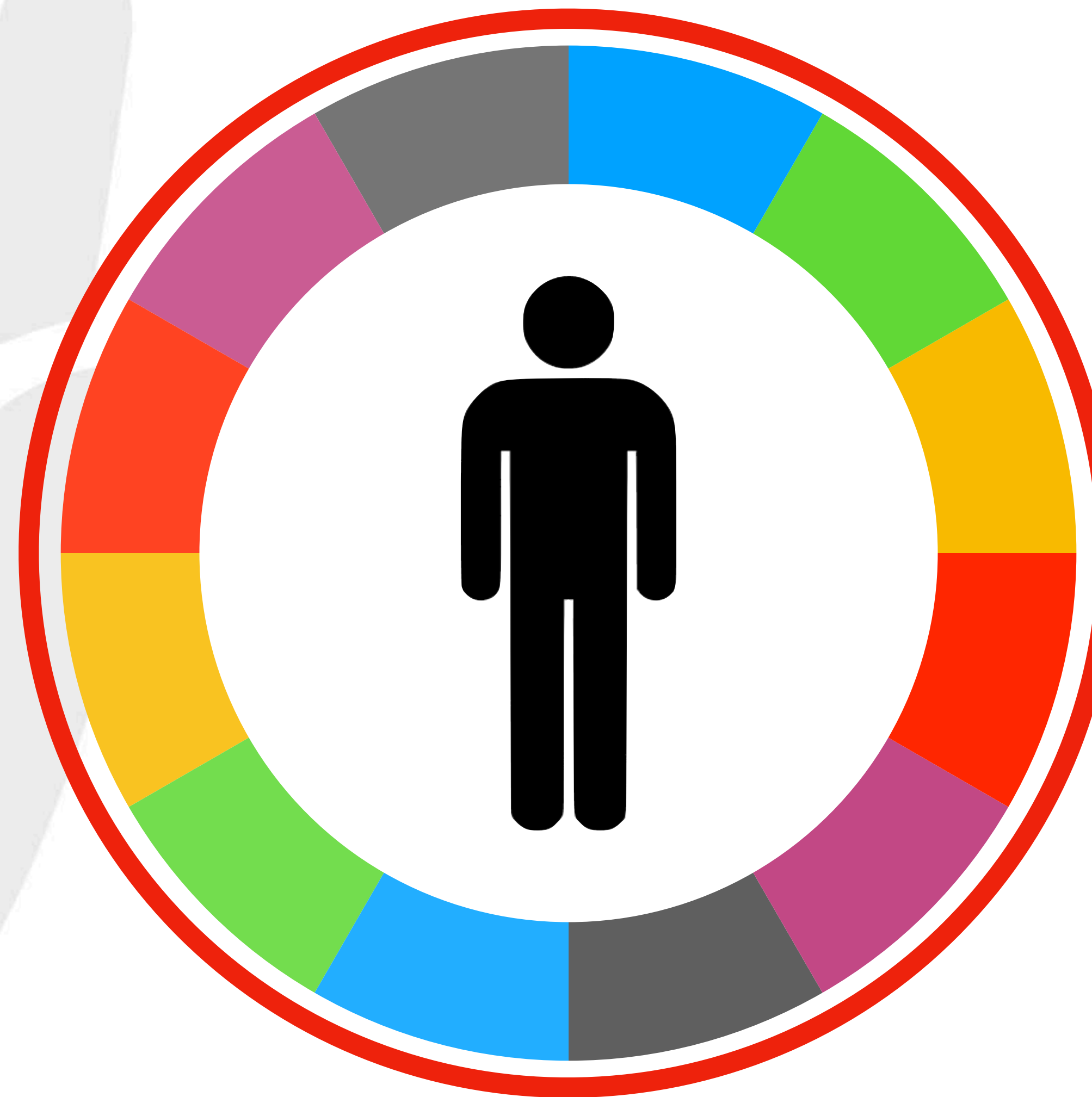
Eleonora Zuffi - Infermiere 118 Area Grossetana

| ABCDE chart |  |   |   |
|-------------|--|---|---|
|             | EXAMINATION  | INTERVENTION  | GOAL  |
| <b>A</b>    | <ul style="list-style-type: none"> <li>airway noises</li> <li>position of head</li> <li>foreign body</li> <li>fluid, secretions</li> <li>oedema</li> </ul>   | <ul style="list-style-type: none"> <li>open</li> <li>suction</li> <li>secure</li> <li>O<sub>2</sub></li> </ul>  | Patent airway                                 |
| <b>B</b>    | <ul style="list-style-type: none"> <li>look - listen - feel approach</li> <li>respiratory rate and effort</li> <li>breath and added sounds</li> <li>subcutaneous emphysema</li> <li>symmetry of chest movement</li> <li>tracheal deviation</li> <li>jugular vein distention</li> <li>cyanosis</li> </ul> SpO <sub>2</sub> - ETCO <sub>2</sub> - USG - X-ray - CT | <ul style="list-style-type: none"> <li>O<sub>2</sub> according to SpO<sub>2</sub></li> <li>pneumothorax therapy</li> <li>inhalation therapy</li> <li>ventilation</li> </ul>                 | Sufficient oxygenation and ventilation        |
| <b>C</b>    | <ul style="list-style-type: none"> <li>heart rate</li> <li>blood pressure</li> <li>capillary refill time</li> <li>bleeding</li> <li>skin colour</li> <li>blood samples</li> <li>diuresis</li> </ul> ECG - USG - CT - X-ray   | <ul style="list-style-type: none"> <li>I.V. / I.O. access</li> <li>control of bleeding</li> <li>massive haemorrhage protocol</li> <li>fluids</li> <li>drugs</li> <li>transfusion</li> </ul> | Stabilization of circulation                  |
| <b>D</b>    | <ul style="list-style-type: none"> <li>AVPU / GCS</li> <li>reactivity and symmetry of pupils</li> <li>blood glucose level</li> <li>basic neurological examination</li> <li>posture</li> <li>toxicological examination</li> </ul>   | <ul style="list-style-type: none"> <li>glucose</li> <li>antidotes</li> </ul>  | Evaluation of neurological state              |
| <b>E</b>    | <ul style="list-style-type: none"> <li>head to toe examination</li> <li>medical history</li> <li>temperature</li> <li>injuries</li> <li>oedemas</li> <li>scars</li> <li>signs of drug abuse</li> <li>skin changes</li> <li>signs of infection/sepsis</li> </ul>  | <ul style="list-style-type: none"> <li>Identified cause therapy</li> <li>thermomanagement</li> <li>trauma treatment</li> <li>insertion of NGT, IUC</li> </ul>                               | Revealing other symptoms and thermomanagement |

## PROCEDURE PER AMBULANZA CON INFERMIERE A BORDO

- ★ ARRESTO CARDIACO NON TRAUMATICO
- ★ DIFFICOLTA' RESPIRATORIA
- ★ OSTRUZIONE DA CORPO ESTRANEO
- ★ ANAFILASSI
- ★ INTOSSICAZIONE DA MONOSSIDO DI CARBONIO
- ★ DOLORE TORACICO
- ★ BRADIARITMIA
- ★ TACHIARITMIA
- ★ DEFICIT NEUROLOGICO ACUTO
- ★ CRISI CONVULSIVA
- ★ IPOGLICEMIA
- ★ OVERDOSE DA OPIOIDI
- ★ SEPSI
- ★ ANALGESIA
- ★ TRAUMA
- ★ ASSISTENZA AL TRAVAGLIO DI PARTO
- ★ ASSISTENZA AL PARTO
- ★ ASSISTENZA AL NEONATO

- ALS
- PALS
- CTA
- SIMULAZIONE
- STOP THE BLEED
- MASSAGGIATORE MECCANICO
- POCUS NEL TERRITORIO
- WEBINAR MONOTEMATICI
- MAXIEMERGENZE
- GESTIONE VIE AEREE
- TRASFERIMENTI CRITICI
- SEMEIoTICA CHIRURGICA



**REALTA' LOCALE**

**ASSISTENZA HQ**

**LAVORO IN RETE**

**EFFICIENZA**

# INTEGRAZIONE TECNOLOGICA

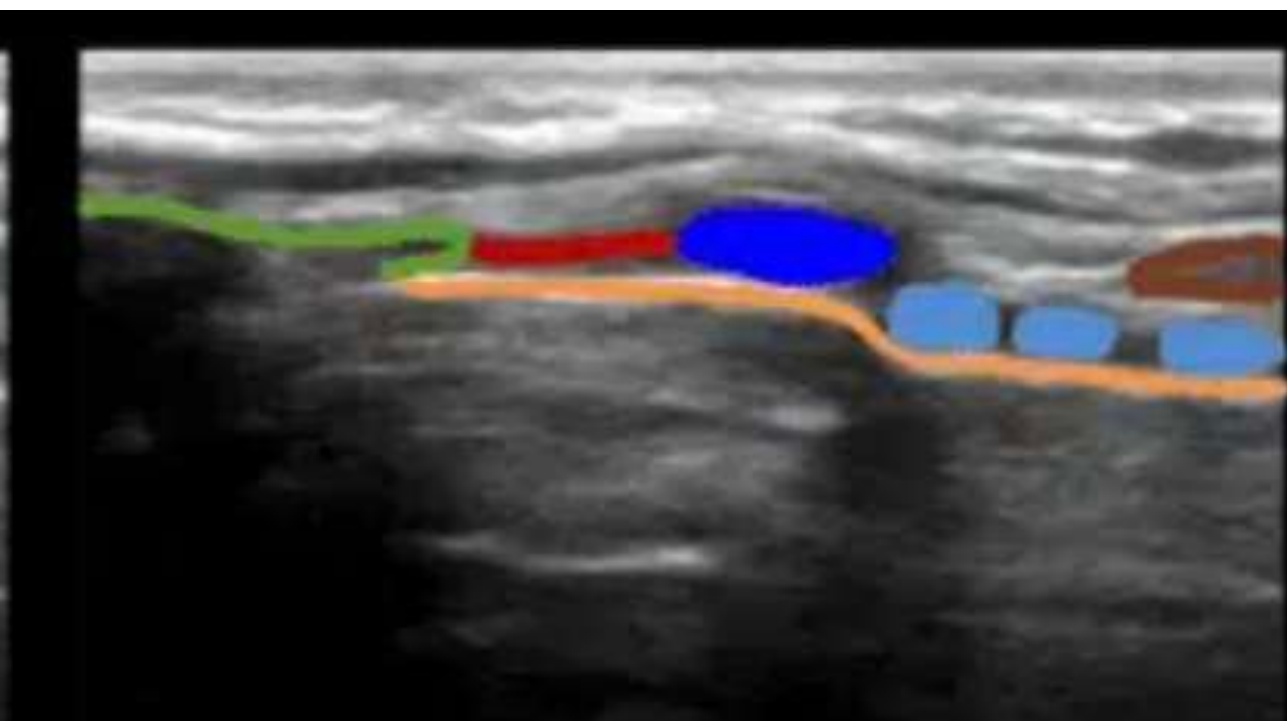
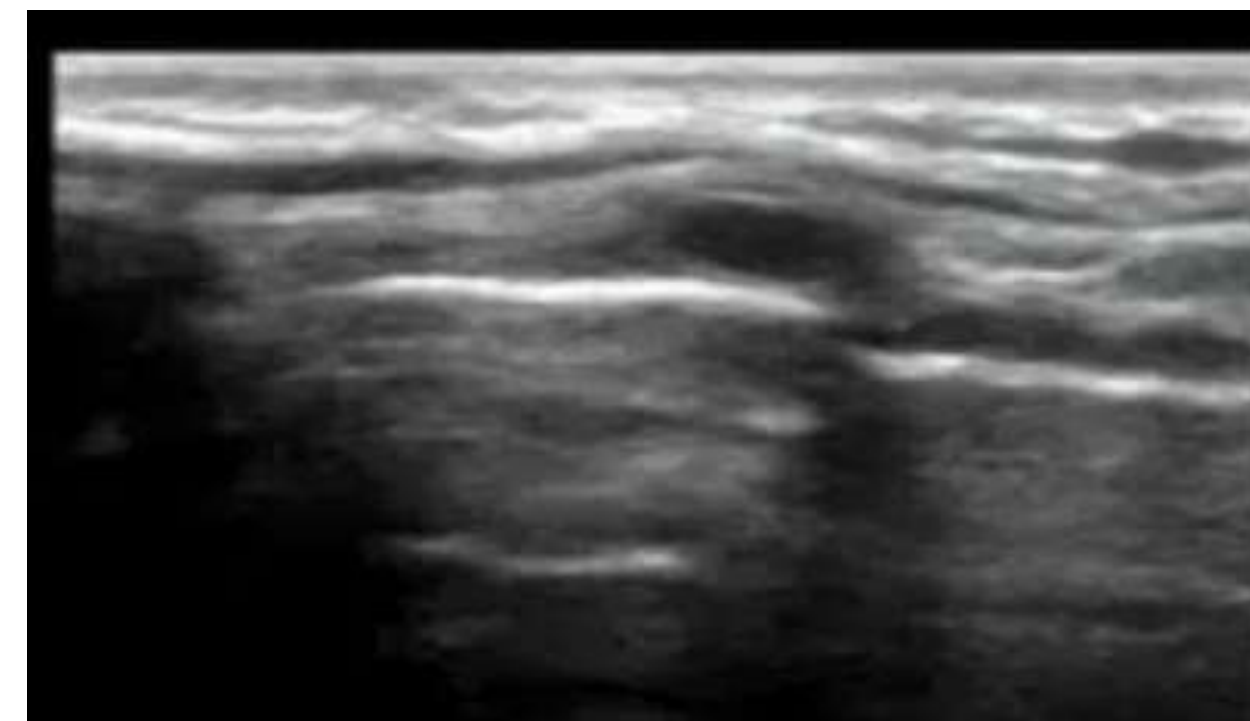
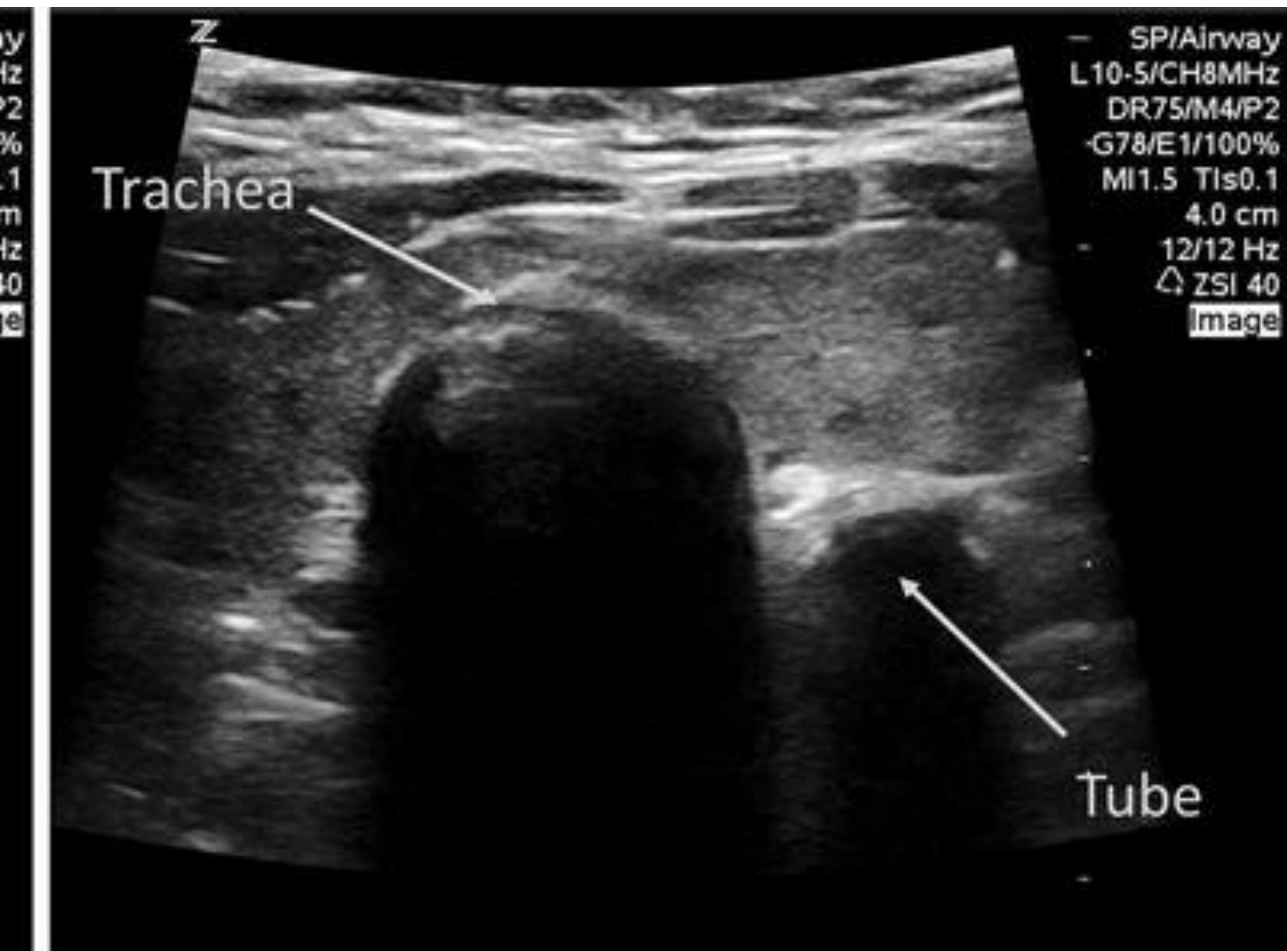
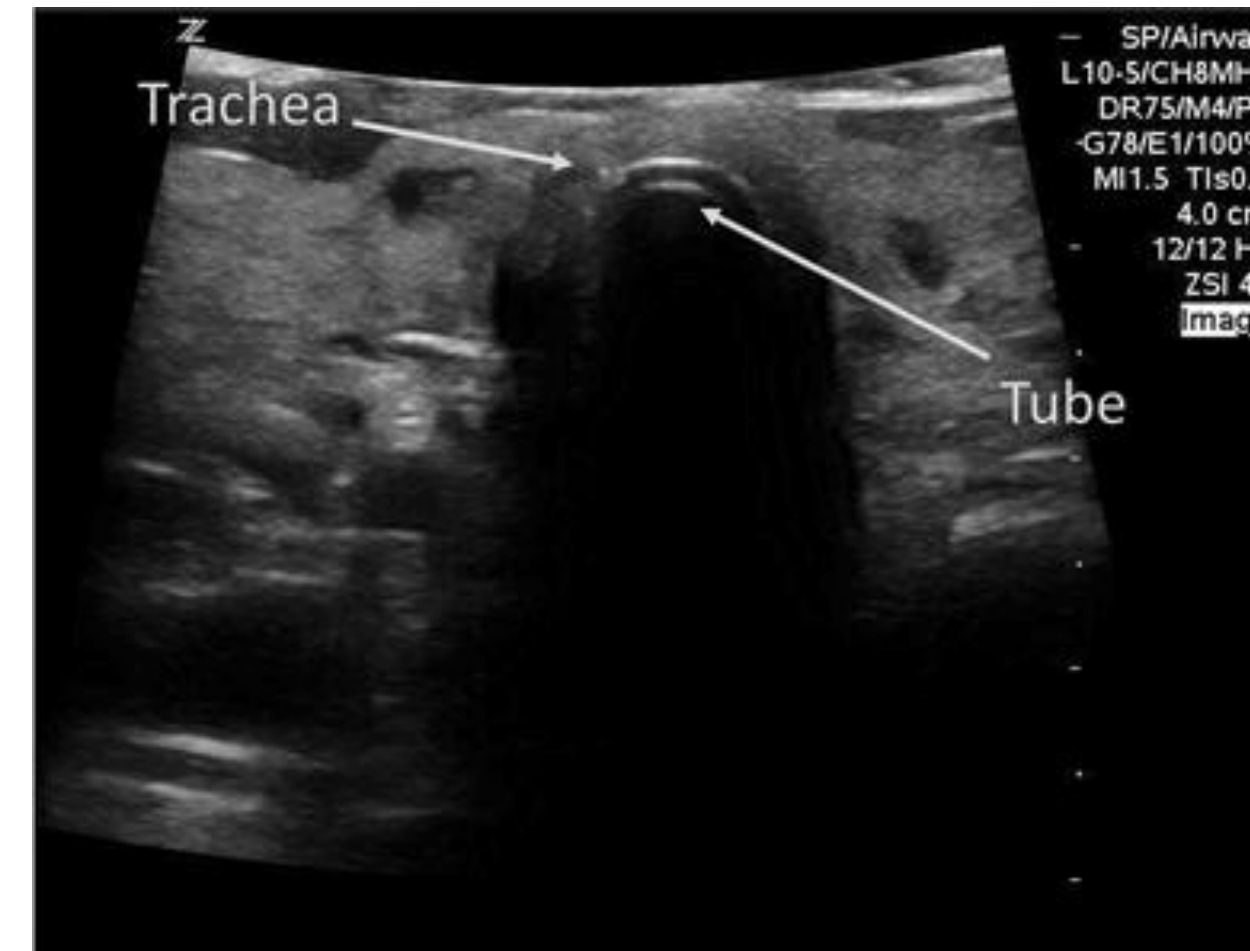


# INTEGRAZIONE TECNOLOGICA

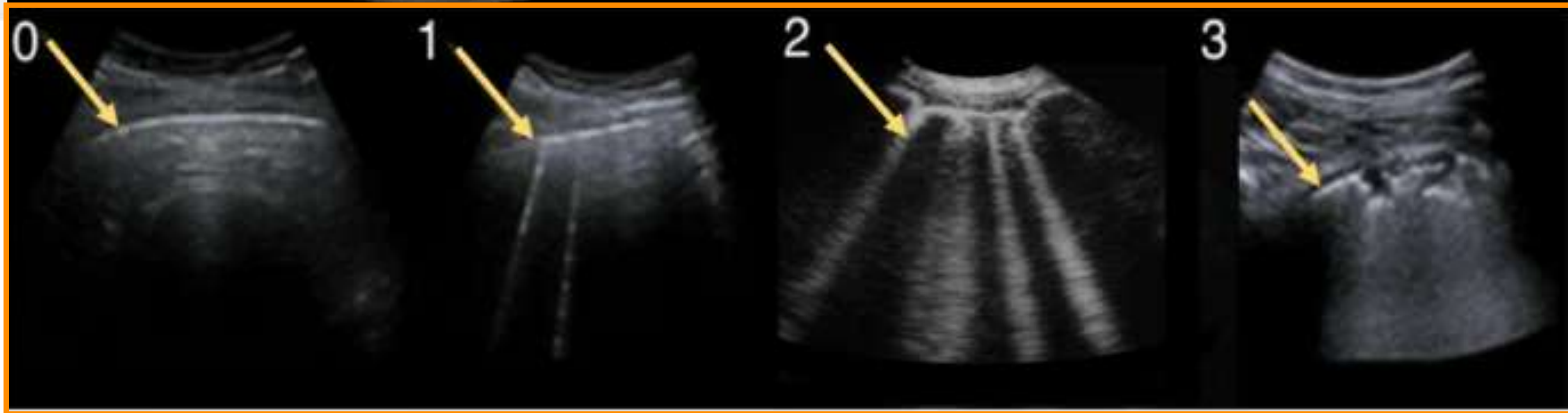
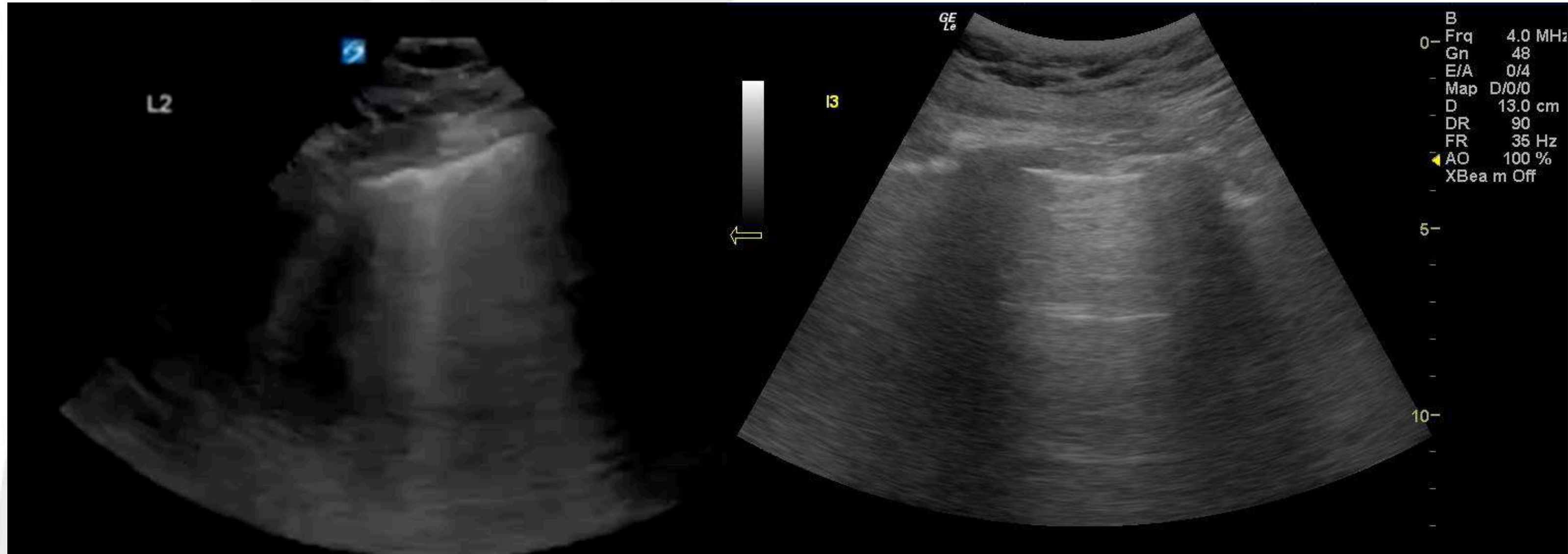


| ABCDE chart |  |   |  |
|-------------|--|---|--|
|             | EXAMINATION  | INTERVENTION  | GOAL   |
| <b>A</b>    | <ul style="list-style-type: none"> <li>airway noises</li> <li>position of head</li> <li>foreign body</li> <li>fluid, secretions</li> <li>oedema</li> </ul>   | <ul style="list-style-type: none"> <li>open</li> <li>suction</li> <li>secure</li> <li>O<sub>2</sub></li> </ul>  | <b>Patent<br/>airway</b>                                     |
| <b>B</b>    | <ul style="list-style-type: none"> <li>look - listen - feel approach</li> <li>respiratory rate and effort</li> <li>breath and added sounds</li> <li>subcutaneous emphysema</li> <li>symmetry of chest movement</li> <li>tracheal deviation</li> <li>jugular vein distention</li> <li>cyanosis</li> </ul> | <ul style="list-style-type: none"> <li>O<sub>2</sub> according to SpO<sub>2</sub></li> <li>pneumothorax therapy</li> <li>Inhalation therapy</li> <li>ventilation</li> </ul>                 | <b>Sufficient<br/>oxygenation<br/>and ventilation</b>        |
| <b>C</b>    | <ul style="list-style-type: none"> <li>heart rate</li> <li>blood pressure</li> <li>capillary refill time</li> <li>bleeding</li> <li>skin colour</li> <li>blood samples</li> <li>diuresis</li> </ul>  | <ul style="list-style-type: none"> <li>I.V. / I.O. access</li> <li>control of bleeding</li> <li>massive haemorrhage protocol</li> <li>fluids</li> <li>drugs</li> <li>transfusion</li> </ul> | <b>Stabilization<br/>of circulation</b>                      |
| <b>D</b>    | <ul style="list-style-type: none"> <li>AVPU / GCS</li> <li>reactivity and symmetry of pupils</li> <li>blood glucose level</li> <li>basic neurological examination</li> <li>posture</li> <li>toxicological examination</li> </ul>   | <ul style="list-style-type: none"> <li>glucose</li> <li>antidotes</li> </ul>  | <b>Evaluation<br/>of neurological<br/>state</b>              |
| <b>E</b>    | <ul style="list-style-type: none"> <li>head to toe examination</li> <li>medical history</li> <li>temperature</li> <li>injuries</li> <li>oedemas</li> <li>scars</li> <li>signs of drug abuse</li> <li>skin changes</li> <li>signs of infection/sepsis</li> </ul>  | <ul style="list-style-type: none"> <li>identified cause therapy</li> <li>thermomanagement</li> <li>trauma treatment</li> <li>insertion of NGT, IUC</li> </ul>                               | <b>Revealing other<br/>symptoms and<br/>thermomanagement</b> |

# A



**B**



| ABCDE chart  |   |  |
|--|---|--|
| EXAMINATION  | INTERVENTION  | GOAL   |
| <b>A</b><br>- airway status<br>- position of head<br>- foreign body<br>- fluid, secretions<br>- oedema   | - open<br>- suction<br>- intubate<br>- O <sub>2</sub>   | - Patent<br>- airway                                 |
| <b>B</b><br>- look: Skin: red approach<br>- respiratory rate and effort<br>- breath and chest sounds<br>- subcutaneous emphysema<br>- symmetry of chest movement<br>- tracheal deviation<br>- jugular vein distention<br>- cyanosis<br>- SpO <sub>2</sub> , EtCO <sub>2</sub> , USG, X-ray, CT | - O <sub>2</sub> according to SpO <sub>2</sub><br>- chest physiotherapy<br>- suction therapy<br>- ventilation               | - Sufficient<br>- oxygenation<br>- and ventilation   |
| <b>C</b><br>- heart rate<br>- blood pressure<br>- capillary refill time<br>- bleeding<br>- skin colour<br>- blood samples<br>- diuresis<br>- ECG, USG, CT, X-ray   | - IV / IO access<br>- control of bleeding<br>- measure haemorrhage<br>- transfuse<br>- fluids<br>- drugs<br>- resuscitation | - Stabilisation<br>- of circulation                  |
| <b>D</b><br>- AVPU / GCS<br>- reactivity and symmetry<br>- of pupils<br>- blood glucose level<br>- basic neurological<br>- examination<br>- posture<br>- neurological examination  | - glucose<br>- antibiotics  | - Evaluation<br>- of neurological<br>- state         |
| <b>E</b><br>- head to toe examination<br>- medical history<br>- temperature<br>- injuries<br>- haemorrhage<br>- oedema<br>- scars<br>- signs of drug abuse<br>- skin changes<br>- signs of infection/sepsis  | - identified cause therapy<br>- haemorrhage control<br>- trauma treatment<br>- correction of ABC, B+C                       | - Revealing other<br>- symptoms and<br>- haemostasis |

| EMOGASANALISI |   |
|---------------|---|
| 1             | PH  |
| 2             | PCO <sub>2</sub> /HCO <sub>3</sub> <sup>-</sup> |
| 3             | PaO <sub>2</sub> - P/F                          |
| 4             | ELETTROLITI                                     |
| 5             | LATTATI   |
| 6             | Altri parametri                                 |

**C**

S. OSTRUTTIVO

S.CARDIOGENO

S.IPOVOLEMICO



| ABCDE chart   |   |   |
|---|---|---|
| EXAMINATION   | INTERVENTION  | GOAL  |
| <b>A</b> <ul style="list-style-type: none"> <li>airway noises</li> <li>position of head</li> <li>foreign body</li> <li>fluid, secretions</li> <li>oedema</li> </ul>   | <ul style="list-style-type: none"> <li>open</li> <li>suction</li> <li>secure</li> <li>O<sub>2</sub></li> </ul>  | Patent<br>airway                                    |
| <b>B</b> <ul style="list-style-type: none"> <li>look - listen - feel approach</li> <li>respiratory rate and effort</li> <li>breath and added sounds</li> <li>subcutaneous emphysema</li> <li>symmetry of chest movement</li> <li>tracheal deviation</li> <li>jugular vein distention</li> <li>cyanosis</li> </ul> SpO <sub>2</sub> - ETCO <sub>2</sub> - USG - X-ray - CT | <ul style="list-style-type: none"> <li>O<sub>2</sub> according to SpO<sub>2</sub></li> <li>pneumothorax therapy</li> <li>inhalation therapy</li> <li>ventilation</li> </ul>             | Sufficient<br>oxygenation<br>and ventilation        |
| <b>C</b> <ul style="list-style-type: none"> <li>heart rate</li> <li>blood pressure</li> <li>capillary refill time</li> <li>bleeding</li> <li>skin colour</li> <li>blood samples</li> <li>diuresis</li> </ul> ECG - USG - CT - X-ray   | <ul style="list-style-type: none"> <li>IV / IO access</li> <li>control of bleeding</li> <li>massive haemorrhage protocol</li> <li>fluids</li> <li>drugs</li> <li>transfusion</li> </ul> | Stabilization<br>of circulation                     |
| <b>D</b> <ul style="list-style-type: none"> <li>AVPU / GCS</li> <li>reactivity and symmetry of pupils</li> <li>blood glucose level</li> <li>basic neurological examination</li> <li>posture</li> <li>toxicological examination</li> </ul>   | <ul style="list-style-type: none"> <li>glucose</li> <li>antidotes</li> </ul>  | Evaluation<br>of neurological<br>state              |
| <b>E</b> <ul style="list-style-type: none"> <li>head to toe examination</li> <li>medical history</li> <li>temperature</li> <li>injuries</li> <li>oedemas</li> <li>scars</li> <li>signs of drug abuse</li> <li>skin changes</li> <li>signs of infection/sepsis</li> </ul>  | <ul style="list-style-type: none"> <li>identified cause therapy</li> <li>thermomanagement</li> <li>trauma treatment</li> <li>insertion of NGT, ILC</li> </ul>                           | Revealing other<br>symptoms and<br>thermomanagement |

PROCEDURE  
ECOGUIDATE

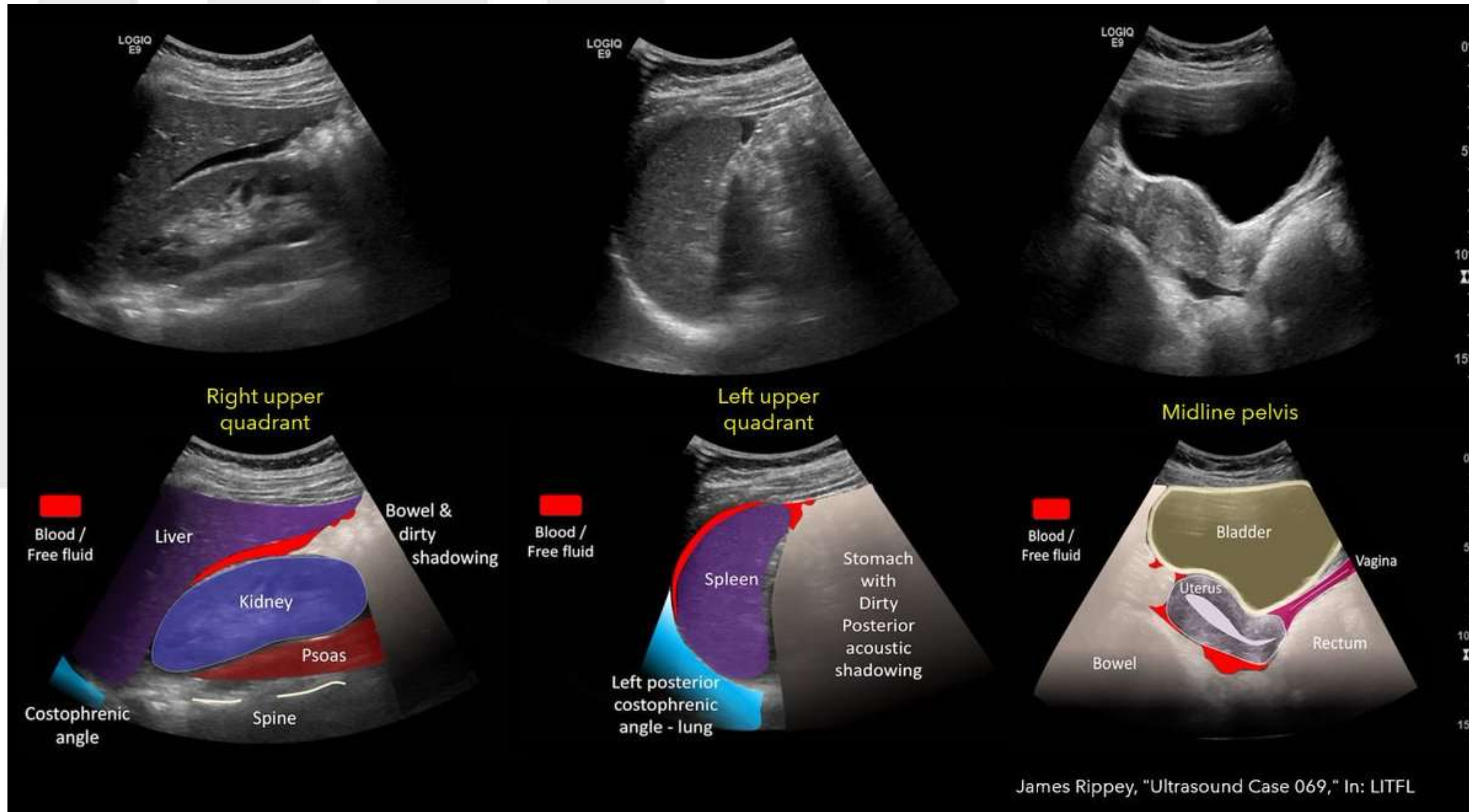


**C**

DOVE?

SOSTA TECNICA?

PRE-ALLERTA MT



**TASH SCORE**  
TRAUMA ASSOCIATED SEVERE HEMORRHAGE

score <9  
need for MT <5%

Gender  
male (+1)

Blood Pressure  
SBP <100 (+4) <120 (+1)

Hemoglobin  
<7 (+8) <9 (+6) <10 (+4) <11 (+3) <12 (+2)

Pulse  
>120 (+2)

Base Excess  
<-10 (+4) <-6 (+3) <-2 (+1)

FAST  
+3 if positive

Unstable Pelvic fx  
+6 if present

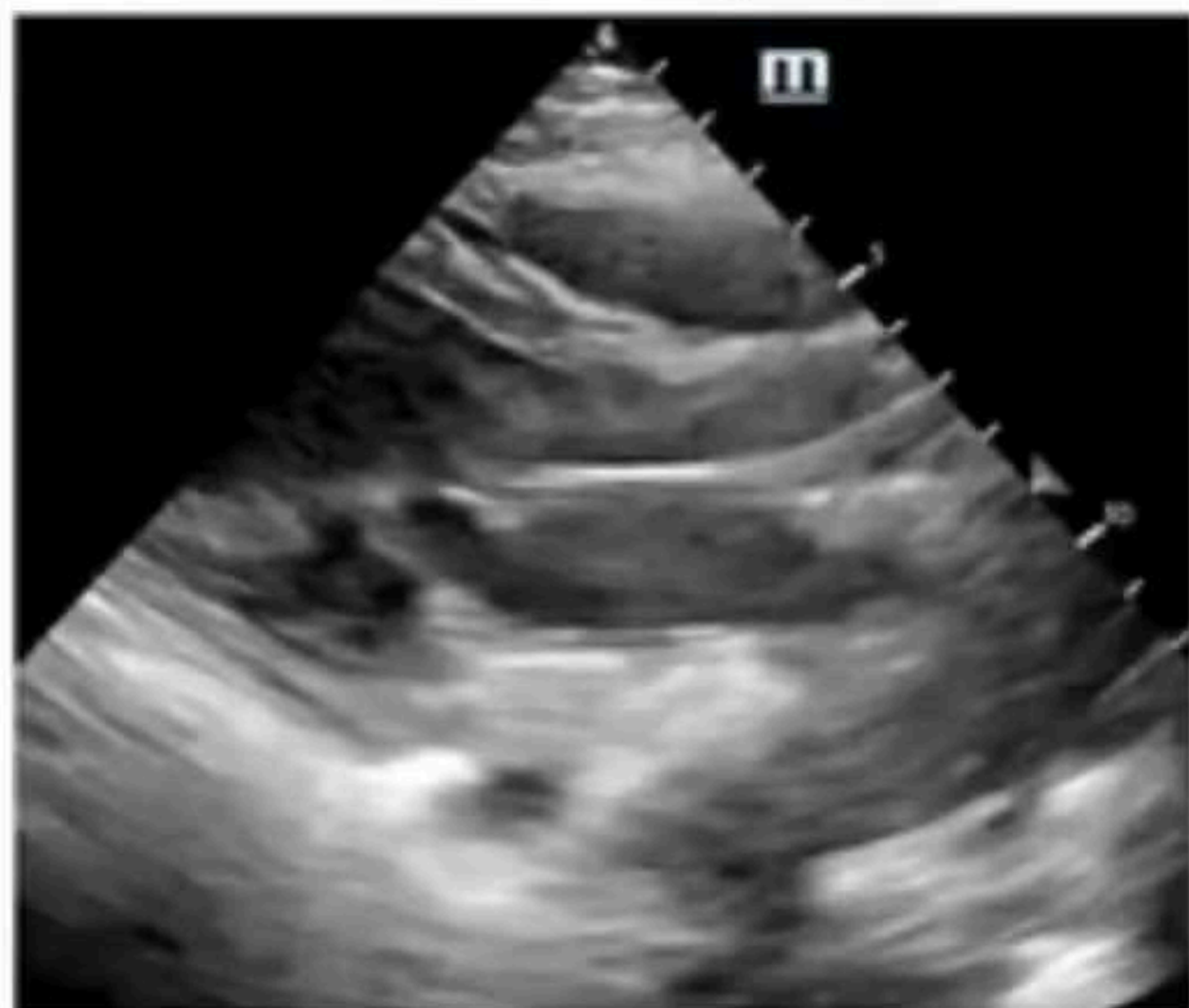
Open or dislocated femur fx  
+3 if present



# ACR

## Cardiac Arrest

PEA or Asystole



*No pulse + Asystole or PEA on monitor*

Pseudo-PEA



*No pulse + PEA on monitor*

ROSC/Perfusing Rhythm



*Pulse + organized activity on monitor*





*“È il tempo che tu hai perduto per la tua rosa che ha fatto la tua rosa così importante.”*

*Grazie per l'attenzione*